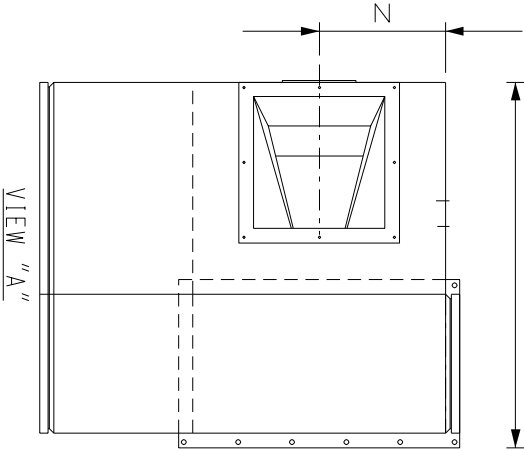
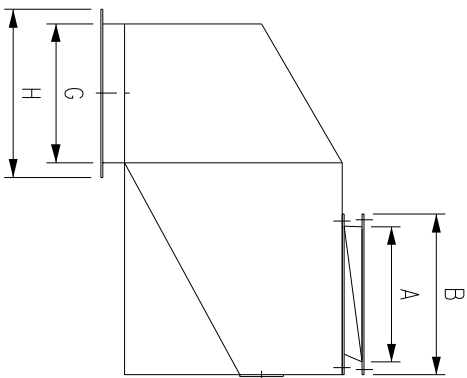
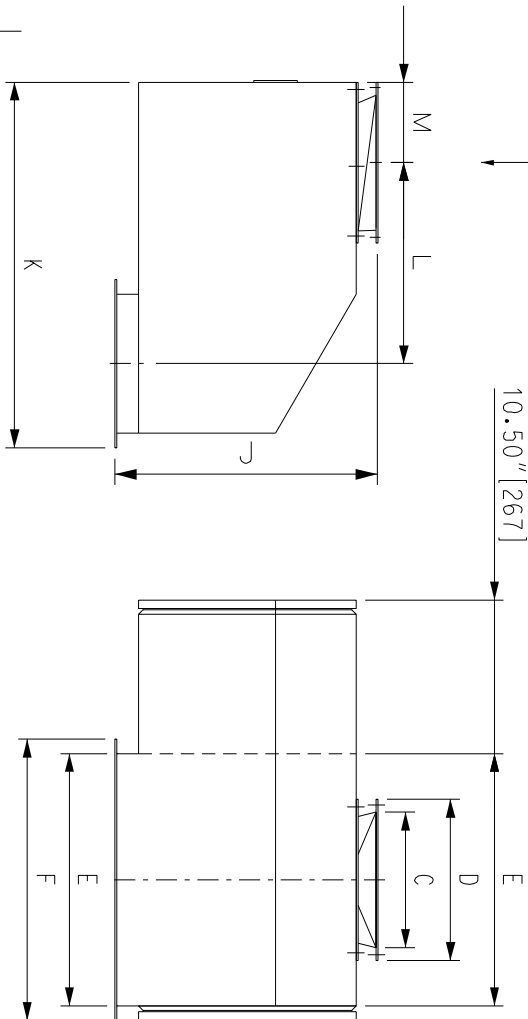


MODEL #	CAPACITY T/HR	A	B	C	D	E	F	G	H	J	K	L	M	N
25F-10	2-10	6.00" [152]	8.00" [228]	6.00" [152]	8.00" [228]	17.25" [438]	19.25" [489]	9.50" [241]	11.50" [292]	18.00" [457]	25.00" [635]	13.75" [349]	5.50" [140]	8.63" [219]
25F-40	8-40	9.00" [228]	11.00" [279]	9.00" [228]	11.00" [279]	17.25" [438]	19.25" [489]	9.50" [241]	11.50" [292]	18.00" [457]	25.00" [635]	13.75" [349]	5.50" [140]	8.63" [219]
25F-80	16-80	12.00" [305]	14.00" [356]	12.00" [305]	14.00" [356]	20.25" [514]	22.25" [565]	9.50" [241]	11.50" [292]	20.00" [508]	25.00" [635]	12.25" [311]	7.00" [178]	10.13" [257]
25F-240	48-240	16.00" [406]	19.50" [495]	22.00" [559]	25.50" [648]	30.25" [769]	32.25" [819]	16.00" [406]	18.00" [457]	24.00" [610]	37.00" [940]	18.00" [457]	9.75" [248]	15.13" [384]

VIEW "A"



VIEW "A"

NOTE:  
1. DIMENSIONS ARE IN INCHES [MILLIMETERS].

7	ADDONG 2 WITH FLANGE DETAILS
6	05/98 CHG. DIM. L, -25F-80
5	02/98 DELETE 25F-20 & ADD DIM. L, M, N.
	REV. DATE

DESCRIPTION

PLEASE:  
DO NOT MANUALLY ALTER  
THIS CAD DRAWING.  
DO NOT SCALE DRAWING.

**COMPTROL**  
*Computer Control Inc.*

TECHNOLOGY THAT'S BEEN PUT THROUGH THE MILL

TOLERANCES

TITLE:

25F MODELS

IMPERIAL	METRIC
FRACTIONS +1/16	MILLIMETERS .x ± 0.5
DECIMALS .xx ± 0.05	.xx ± 0.05
.xxx ± 0.005	.xxx ± 0.005

DRAWN: K.P.

DATE: 22/04/96

DRAWING NO.: 95-A154

APPROV:

DATE:

SHEET: 1 OF 2 REV. 7