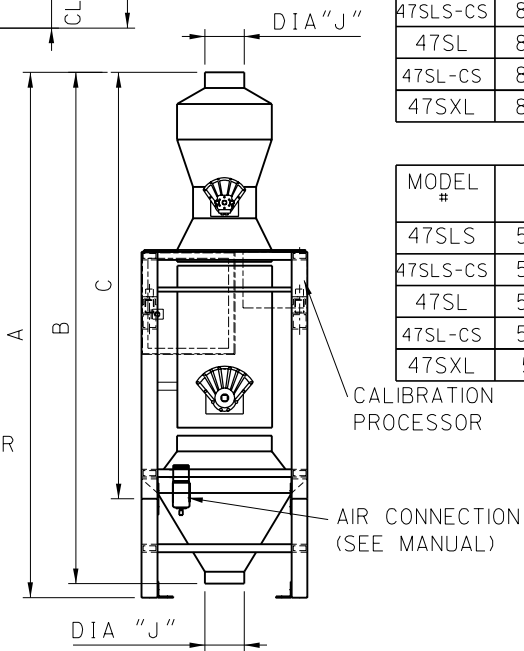
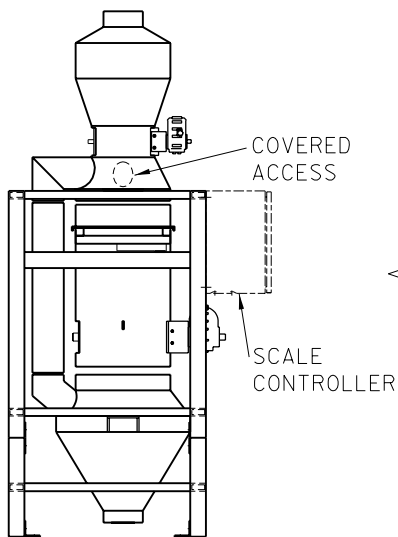
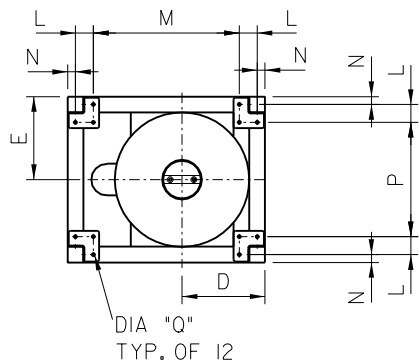


MODEL #	A	B	C	D	E	F	G	H
47SLS	81"	78 "	N/A	13 ⁵ / ₈ "	13 ³ / ₄ "	12 ¹ / ₂ "	27 ¹ / ₂ "	31 ¹ / ₈ "
47SLS-CS	86 ³ / ₄ "	83 ³ / ₄ "	N/A	13 ⁵ / ₈ "	13 ³ / ₄ "	12 ¹ / ₂ "	27 ¹ / ₂ "	31 ¹ / ₈ "
47SL	97 ¹ / ₄ "	94 ¹ / ₄ "	N/A	13 ⁵ / ₈ "	13 ³ / ₄ "	12 ¹ / ₂ "	27 ¹ / ₂ "	31 ¹ / ₈ "
47SL-CS	103"	100 "	N/A "	13 ⁵ / ₈ "	13 ³ / ₄ "	12 ¹ / ₂ "	27 ¹ / ₂ "	31 ¹ / ₈ "
47SXL	136 ¹ / ₂ "	131 ¹ / ₂ "	102 "	15 ⁵ / ₈ "	15"	16"	30"	36 ⁵ / ₈ "

MODEL #	J	K	L	M	N	O	P	Q
47SLS	8" DIA	N/A	2 ¹ / ₄ "	24 ⁵ / ₈ "	1"	N/A	21"	3 ³ / ₈ " DIA
47SLS-CS	8" DIA	N/A	2 ¹ / ₄ "	24 ⁵ / ₈ "	1"	N/A	21"	3 ³ / ₈ " DIA
47SL	8" DIA	N/A	2 ¹ / ₄ "	24 ⁵ / ₈ "	1"	N/A	21"	3 ³ / ₈ " DIA
47SL-CS	8" DIA	N/A	2 ¹ / ₄ "	24 ⁵ / ₈ "	1"	N/A	21"	3 ³ / ₈ " DIA
47SXL	8" DIA	N/A	2 ¹ / ₄ "	30 ¹ / ₈ "	1"	N/A	23 ¹ / ₂ "	3 ³ / ₈ " DIA



MODEL #	S	T	SHIPPING WEIGHT (LBS/KG)
47SLS	50 ¹ / ₂ "	51 ¹ / ₂ "	611/278
47SLS-CS	50 ¹ / ₂ "	51 ¹ / ₂ "	611/278
47SL	50 ¹ / ₂ "	51 ¹ / ₂ "	620/282
47SL-CS	50 ¹ / ₂ "	51 ¹ / ₂ "	620/282
47SXL	56 "	54"	1210/550



REV.	DATE	DESCRIPTION
B	11/99	REMOVED 47S, ADDED 47SLS, 47SLS-CS AND 47SL-CS

PLEASE:
DO NOT MANUALLY ALTER THIS CAD DRAWING.
DO NOT SCALE DRAWING.

COMPTROL
Computer Control Inc.
TECHNOLOGY THAT'S BEEN PUT THROUGH THE MILL

TOLERANCES		TITLE:	
IMPERIAL	METRIC	47 MODELS	
FRACTIONS ±1/16	MILLIMETERS .x ± 0.5		
DECIMALS .xx ± 0.05	.xx ± 0.05		
xxx ± 0.005	.xx ± 0.05	DRAWN: K.P.	DATE: SEPT.22/97
APPVD:	DATE:	DRAWING NO.:	
		47-SB	